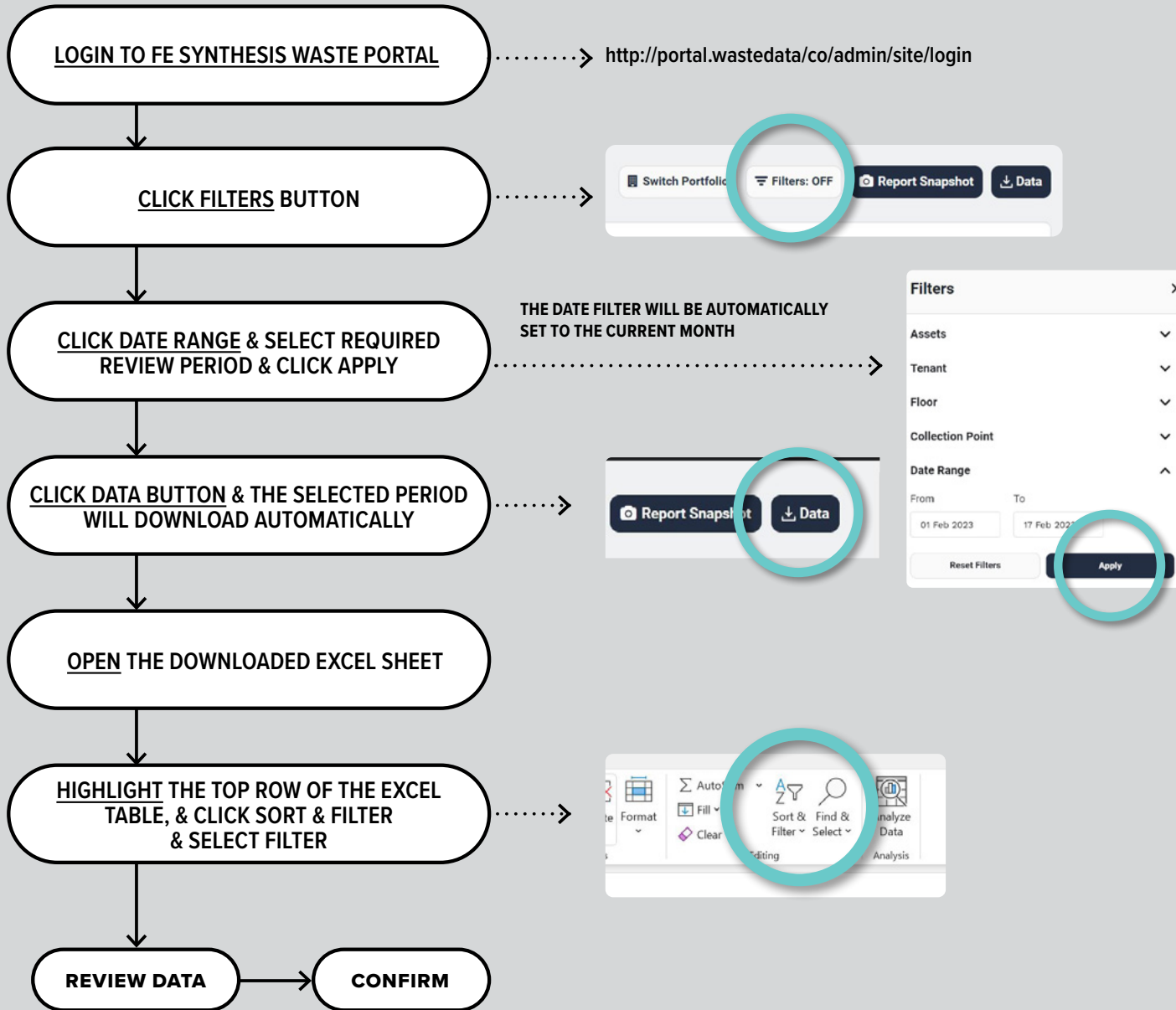




HOW TO DOWNLOAD & REVIEW TRANSACTIONAL DATA

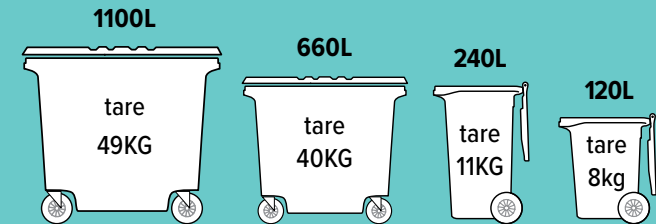


What needs to be reviewed?

1. Ensure all waste streams that were collected from the previous day/night are weighed over the scales & assigned to the correct tenant.
2. Ensure the correct equipment is being entered into the OSAT when weighing.

For Example:

A bin could have been incorrectly weighed as a bag resulting in no tare weight being subtracted, as bags and other loose waste have 0kg tare weight.



3. Please ensure the agreed contamination process is reflected through the use of the OSAT.

For Example:

Cleaners are quickly assessing the recycling streams, identifying contaminated bags, selecting the tenant from where the waste came & entering as "Contaminated" on the OSAT.

PLEASE NOTE

The weighing process should always be reviewed before coming to any conclusions.